

N.E. COR., S.W. 1/4
 SEC. 28-37-41
 (N) 1052381.681
 (E) 901669.702
 NOT FOUND

SEC. 28, TWP. 37 S., RGE. 41 E.
 SEC. 29, TWP. 37 S., RGE. 41 E.
 SEC. 32, TWP. 37 S., RGE. 41 E.
 SEC. 33, TWP. 37 S., RGE. 41 E.

SCALE: 1" = 200'

③ CURVE
 P.I. STA. 57+34.41
 (N) 1,049,273.962
 (E) 898,242.154
 $\Delta = 05^{\circ}38'16''$ LT
 D = 01°18'35"
 T = 215.41'
 L = 430.47'
 R = 4,374.79
 P.C. STA. 55+19.01
 (N) 1,049,106.792
 (E) 898,106.305
 P.T. STA. 59+49.48
 (N) 1,049,453.669
 (E) 898,360.923

W. 1/4 COR.,
 SEC. 28-37-41
 (N) 1052391.713
 (E) 899003.502
 FD. 5/8" IR
 NO CAP

④ CURVE
 P.I. STA. 67+14.19
 $\Delta = 00^{\circ}22'42''$ LT
 (NO CURVE)
 S.W. COR., S.W. 1/4
 SEC. 28-37-41
 (N) 1049714.423
 (E) 899010.621
 FD. BOAT SPIKE IN CUT-OUT

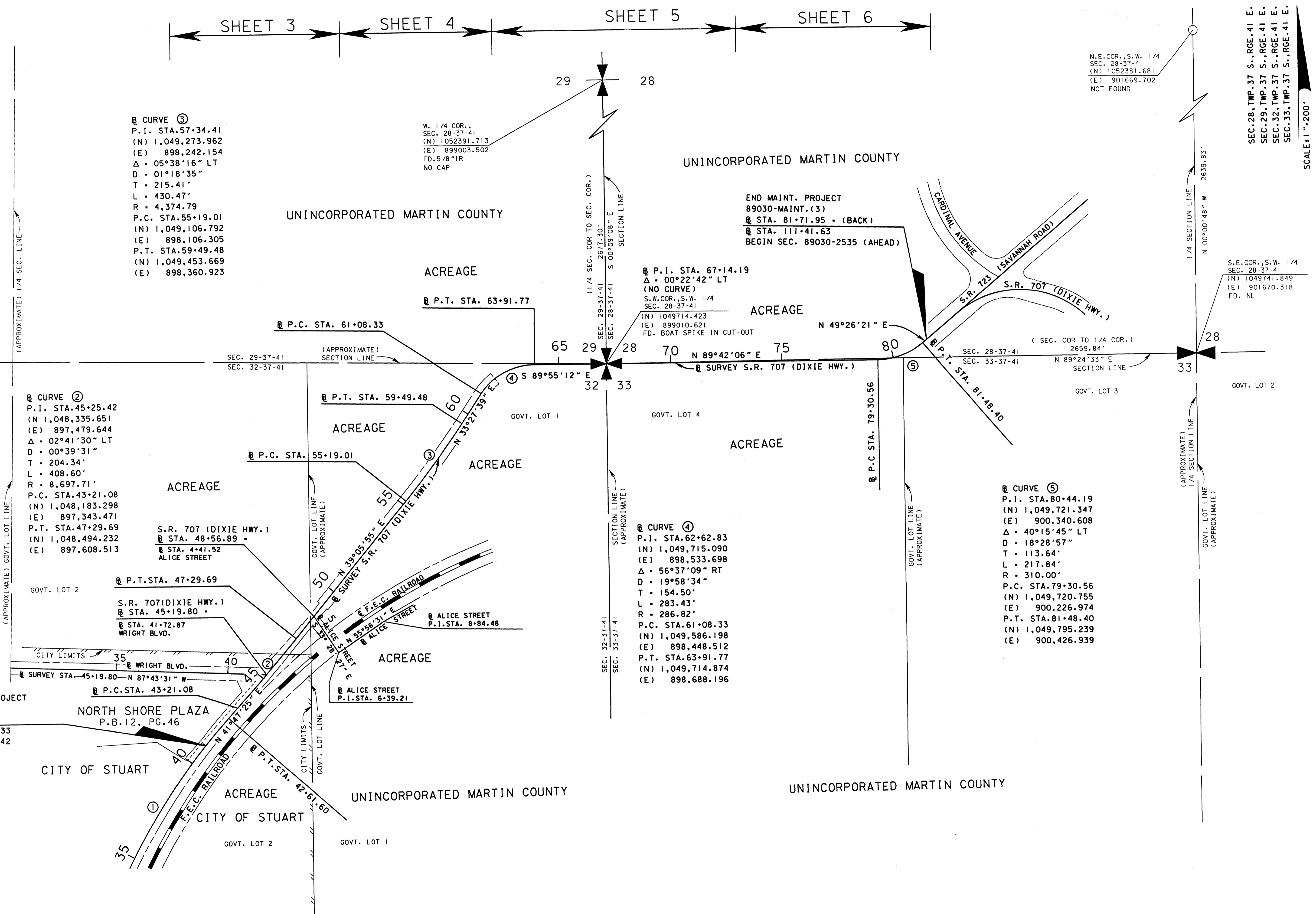
⑤ CURVE
 P.I. STA. 80+44.19
 (N) 1,049,721.347
 (E) 900,340.608
 $\Delta = 40^{\circ}15'45''$ LT
 D = 18°28'57"
 T = 113.64'
 L = 217.84'
 R = 310.00'
 P.C. STA. 79+30.56
 (N) 1,049,720.755
 (E) 900,226.974
 P.T. STA. 81+48.40
 (N) 1,049,795.239
 (E) 900,426.939

④ CURVE
 P.I. STA. 62+62.83
 (N) 1,049,715.090
 (E) 898,533.698
 $\Delta = 56^{\circ}37'09''$ RT
 D = 19°58'34"
 T = 154.50'
 L = 283.43'
 R = 286.82'
 P.C. STA. 61+08.33
 (N) 1,049,586.198
 (E) 898,448.512
 P.T. STA. 63+91.77
 (N) 1,049,714.874
 (E) 898,688.196

② CURVE
 P.I. STA. 45+25.42
 (N) 1,048,335.651
 (E) 897,479.644
 $\Delta = 02^{\circ}41'30''$ LT
 D = 00°39'31"
 T = 204.34'
 L = 408.60'
 R = 8,697.71'
 P.C. STA. 43+21.08
 (N) 1,048,183.298
 (E) 897,343.471
 P.T. STA. 47+29.69
 (N) 1,048,494.232
 (E) 897,608.513

① CURVE
 P.I. STA. 36+40.88
 (N) 1,047,661.118
 (E) 896,876.745
 $\Delta = 24^{\circ}51'08''$ RT
 D = 01°58'12"
 T = 640.88'
 L = 1,261.60'
 R = 2,908.57'
 P.C. STA. 30+00.00
 (N) 1,047,048.039
 (E) 896,690.032
 P.T. STA. 42+61.60
 (N) 1,048,138.950
 (E) 897,303.833

BEGIN MAINT. PROJECT
 89030-MAINT. (3)
 STA. 41+00.00
 (N) 1,048,015.533
 (E) 897,199.542



SEE SHEET 1 FOR GENERAL NOTES, CERTIFICATIONS, LEGEND, ETC.

KEY SHEET

STATE ROAD 707 (DIXIE HWY.)
 FROM WRIGHT BLVD. TO SAVANNAH ROAD

MAINTENANCE MAP

FLORIDA DEPARTMENT OF TRANSPORTATION
 RIGHT OF WAY MAPPING

APPROVED BY: *Jeffrey Smith* DATE: 2/10/03
 DISTRICT RIGHT OF WAY SURVEYOR

REVISION	BY	DATE	REVISION	BY	DATE

BY	DATE
PRELIM L. CEFOLIA	5/17/02
FINAL L. CEFOLIA	10/10/02
CHECKED J. EDGAR	10/11/02

FED. PROJ. NO. N/A	SECTION 89030-MAINT. (3)	MAPS PREPARED BY LB# 696 KIMLEY-HORN AND ASSOCIATES	FIELD BOOK NO.'S SEE SHEET 1
STATE ROAD 707 (DIXIE HWY.)	MARTIN COUNTY	W.P.I. No. N/A	SCALE: 1" = 200'
ITEM/SEGMENT NO. 4035911	SHEET 2 OF 6		